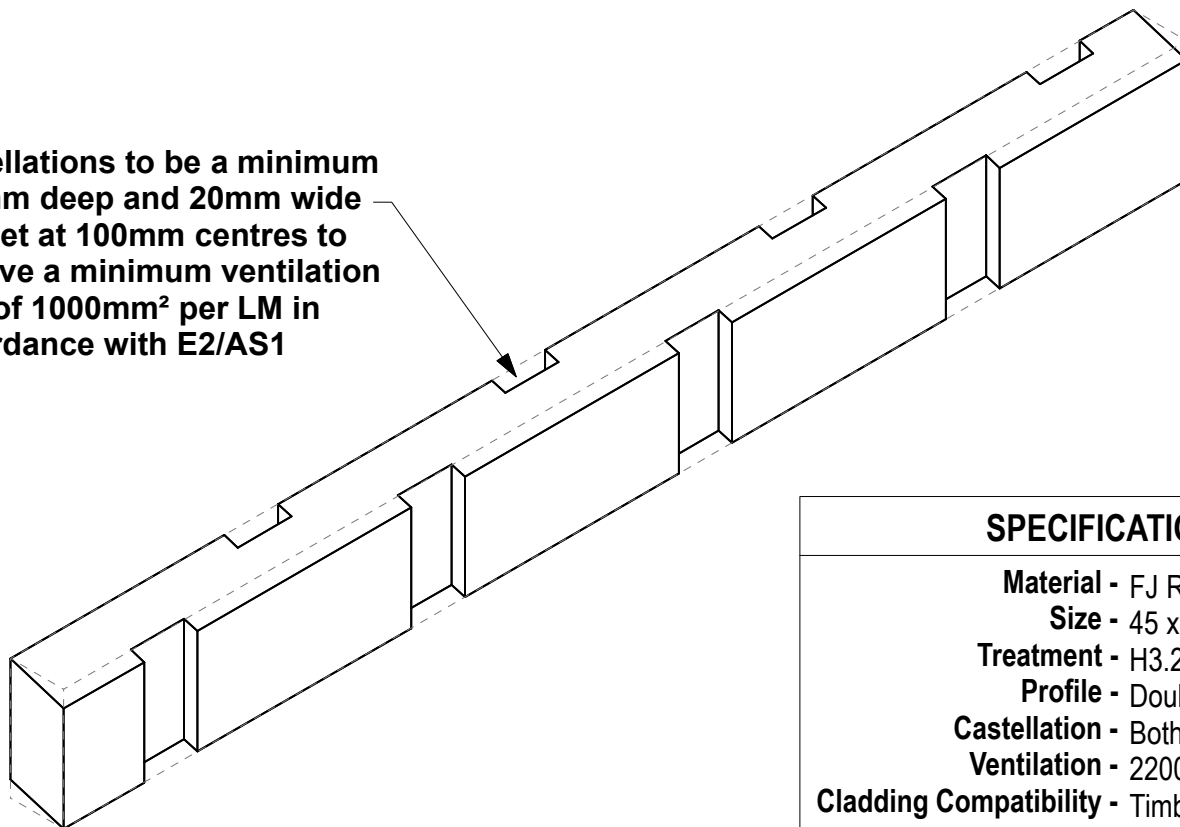
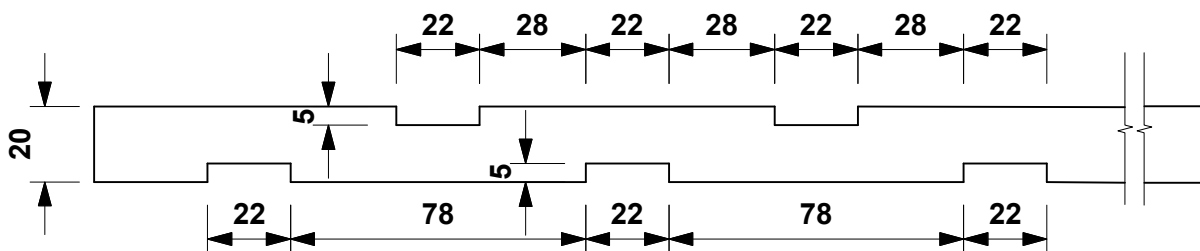


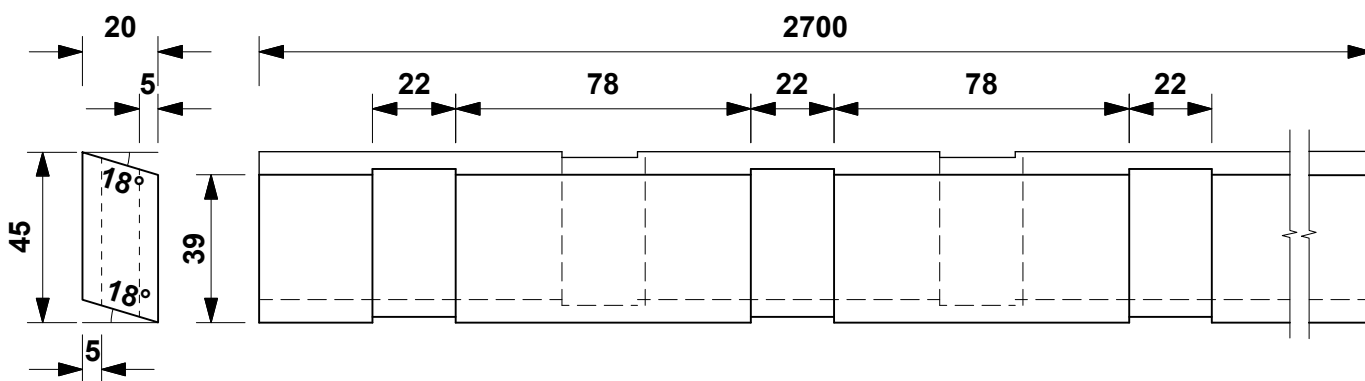
Castellations to be a minimum of 5mm deep and 20mm wide and set at 100mm centres to achieve a minimum ventilation area of 1000mm² per LM in accordance with E2/AS1



SPECIFICATIONS	
Material	- FJ Radiata Pine
Size	- 45 x 20mm
Treatment	- H3.2 MCA
Profile	- Double Bevel
Castellation	- Both Face
Ventilation	- 2200mm ² per l/m
Cladding Compatibility	- Timber, Aluminium, Colorsteel.



TOP VIEW



END VIEW

SIDE VIEW

DO NOT SCALE OFF THIS DRAWING

EB4MP

EZYScribe PRODUCTS
38 ANVIL ROAD
SILVERDALE
AUCKLAND
TEL 09 424-8109



CASTELLATED TIMBER CAVITY BATTEN

2.7m lengths